



ecSeam Cover (Flat Bar)

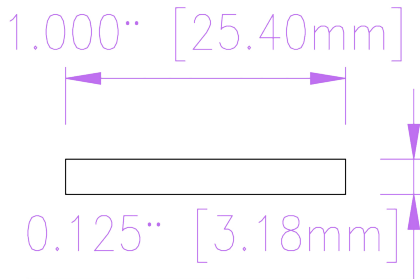
PRODUCT DATA SHEET
U.S. Patent 11,066,846 B1

PART: ecSeam Cover
REV: D
DATE: 2026-05-23
SHEET: 1 of 1

DESCRIPTION

Aluminum trim that conceals the vertical seam between adjacent panel sections in the patented ecFence privacy fence system. Anchored to the post with five color-matched fasteners, sandwiching the panel edges between bar and post face. Available in standard ecFence finish colors, for residential and commercial perimeter applications.

DRAWINGS



CROSS-SECTION

ISOMETRIC

SPECIFICATIONS

Material	6063-T5 aluminum extrusion	Cross-section	1 × 1/8 in (25.4 × 3.18 mm)
Coating	Powder coat per AAMA 2603	Standard length	70 in
Weight, per piece	0.85 lb (0.39 kg)	Field-cut range	1 in to 70 in
Bundling	11 / pack, or any quantity		



DURABLE



ROT-PROOF



TERMITE-PROOF



LOW MAINTENANCE



EASY TO INSTALL

FINISH COLORS

PRODUCTION

● Natural Bronze ○ Arctic White

COMING SOON

● Foggy Gray ● Midnight Black

INSTALLATION & FASTENING

FASTENERS

Covers the vertical seam between two panel sections, sandwiching panel edges between bar and post. 70 in bars come pre-drilled for five #10 × 1-1/2 in self-drilling hex-head screws, color-matched. Sold separately in 50-piece packs.

COMPONENT LENGTH

Fence Height	ecSeam Cover Length
4 ft	45 in
6 ft	70 in
8 ft	95 in

Per fence section.

FIELD CUTTING

Field-cuttable to any length. Use a miter saw with non-ferrous metal blade (TCT, 80T+) for cleanest cuts; a grinder with cutoff disc works but is rougher. Deburr edges. For runs over 70 in, splice with a cut piece or order custom length.

STORAGE & HANDLING

Do not store packaged seam covers outdoors. Combined sun and rain exposure may cause protective film and foam separators to stain the powder-coat finish. Store indoors or under fully waterproof cover until installation.